

POINT OF BEGINNING
SW CORNER NW 1/4
SEC. 15, T35, R70W
FOUND 3'-1/4" ALUM. CAP
ON #6 REBAR PLS# 27612
DATED 1999

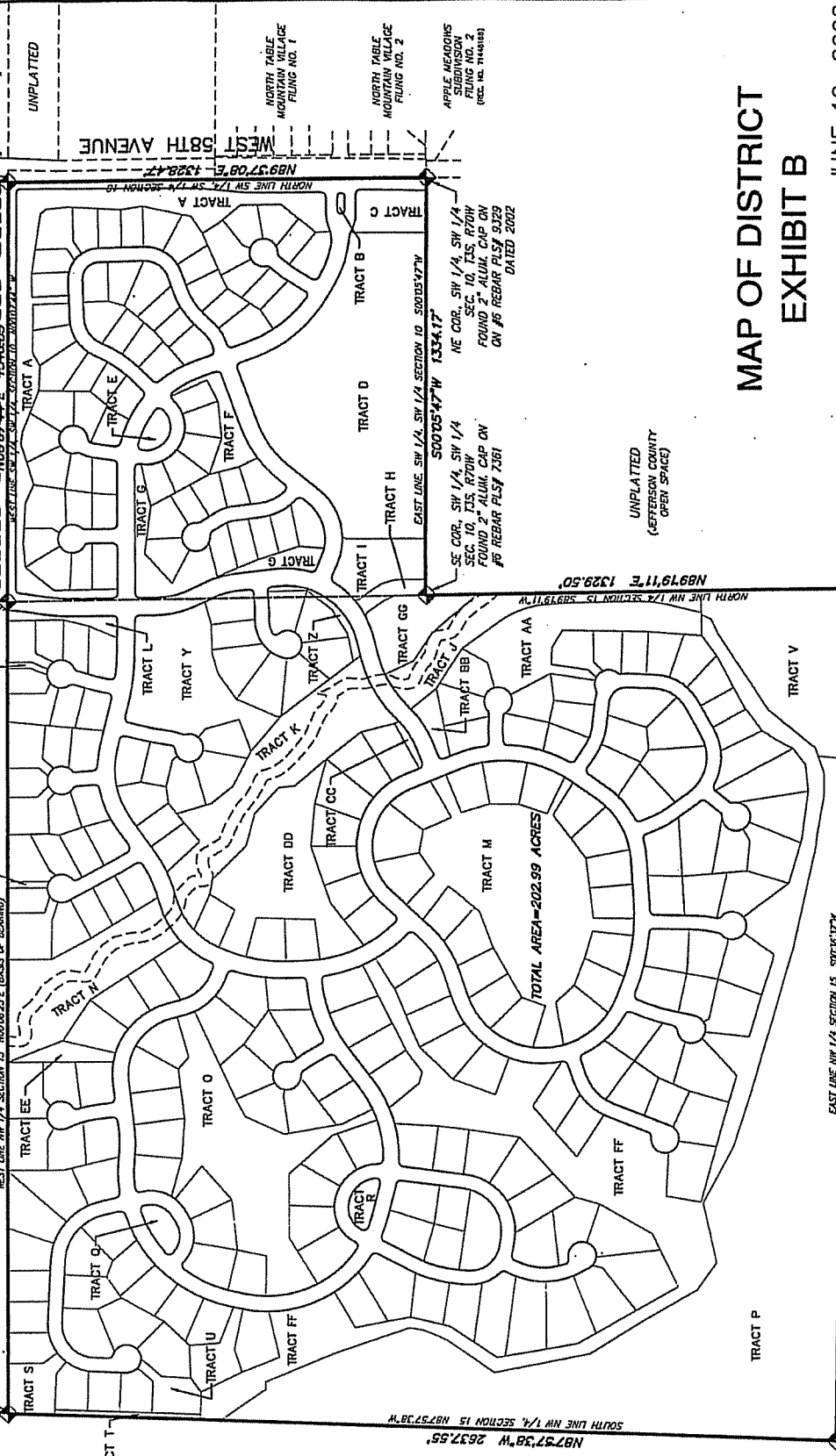
UNPLATTED
(JEFFERSON COUNTY OPEN SPACE)

WEST LINE NW 1/4 SECTION 15 1000202.23'E 2606.07'
N000202.23'E 2606.07'

NW CORNER NW 1/4
SEC. 15, T35, R70W
FOUND 6'x10" RED GRANITE STONE
W/ CHISELED CROSS

FOOTHILLS SUBDIVISION
GILBERT STREET
N09897.44'E 15426.95'

NW COR. SW 1/4, SW 1/4
SEC. 10, T35, R70W
FOUND 2" ALUM. CAP ON
#6 REBAR PLS# 2361



UNPLATTED
(JEFFERSON COUNTY OPEN SPACE)

SOUTH LINE NW 1/4 SECTION 15 N8737.38'W 2637.55'

EAST LINE NW 1/4 SECTION 15 S00036.37'W 2731.36'

UNPLATTED
(JEFFERSON COUNTY OPEN SPACE)

NORTH 1/4 CORNER
SEC. 15, T35, R70W
FOUND 2" ALUM. CAP ON
#6 REBAR PLS# 23516

SE COR. NW 1/4
SEC. 15, T35, R70W
FOUND 2 1/2" ALUM. CAP
ON #6 REBAR PLS# 2361

SE COR. SW 1/4, SW 1/4
SEC. 10, T35, R70W
FOUND 2" ALUM. CAP ON
#6 REBAR PLS# 0229
DATED 2002

UNPLATTED
(JEFFERSON COUNTY OPEN SPACE)

EAST LINE SW 1/4, SW 1/4 SECTION 10 S00054.77'W 1334.17'

NORTH TABLE
MOUNTAIN VILLAGE
PLUNG NO. 1

NORTH TABLE
MOUNTAIN VILLAGE
PLUNG NO. 2

APPLE MEADOWS
SUBDIVISION
PLUNG NO. 1 (REV. 10/14/00)

NORTH LINE SW 1/4, SW 1/4 SECTION 10 N8937.08'E 1328.47'

MAP OF DISTRICT EXHIBIT B

JUNE 19, 2002



MARTIN / MARTIN
CONSULTING ENGINEERS

4251 KIPLING
P.O. BOX 4001
WHEAT RIDGE, CO 80034
303.431.6100
FAX 303.431.4028